

**CITY OF LINCOLN CITY
CITY COUNCIL
WORK SESSION MEETING AGENDA**

FEBRUARY 8, 2023, 3:30 PM

3:30 PM – 5:00 PM - The City Council will hold a Work Session in the Council Chambers, 801 SW Highway 101 - 3rd Floor, Lincoln City, OR 97367.

The meeting location is accessible to persons with disabilities. A request for an interpreter for the hearing impaired, for a hearing-impaired device, or for other accommodations for persons with disabilities, should be made at least 48 hours in advance of the meeting. To request information in an alternate format or other assistance, please contact the City's ADA Coordinator, Kevin Mattias, at [541-996-1013](tel:541-996-1013) or kmattias@lincolncity.org. Visit the [ADA Accessibility | City of Lincoln City, OR](#) webpage to view how the City continues to remain in compliance with Title II of the Americans with Disabilities Act regarding City programs, services, processes, and facilities.

This meeting is a **work session only** and generally does not include public comment.

- 1. CALL TO ORDER**
- 2. DISCUSSION ITEMS**
 - A.** Update Regarding Drive-On Beach Accesses
 - B.** Local Elected Officials: A Guide to Emergency Management
- 3. MISCELLANEOUS**
- 4. ADJOURNMENT**

Council Communication

Update Regarding Drive-On Beach Accesses

| | | | |
|-----------------|------------------|------------------------|--------------------------|
| Meeting Date: | February 8, 2023 | Primary Staff Contact: | Jeanne Sprague |
| Department: | City Council | E-Mail: | JSprague@lincolncity.org |
| Secondary Dept: | | Secondary Contacts: | |
| Approval: | Daphnee Legarza | Estimated Time: | 45 minutes |

Attachments:

Process for Changing Vehicle Use on the Ocean Shore.pdf (PDF)
beach driving statute.pdf (PDF)

Process for Changing Vehicle Use on the Ocean Shore

Request

- External requests may come from:
 - A minimum of 20 landowners or residents in area.
 - A governing body of local government contiguous to zone requested.

Evaluate

- Oregon Parks and Recreation Commission determines whether to open rulemaking on proposed change.
- Requests evaluated based on criteria in OAR 736-022-0005.
- If approved, rulemaking notice filed at the beginning of a month.
- Public comment period of at least 30 days.
- Public hearing in the area, minimum of 21 days after notice filed.

Decide

- Local government contiguous to proposed zone must approve change.
- Oregon Parks and Recreation Commission must adopt rule change.

Process directed by ORS 390.678, OAR 736-022-0005 and 736-001-0005.

Statutes and Rules around vehicle zones on the ocean shore

ORS 390.678 Motor vehicle and aircraft use regulated in certain zones; zone markers; proceedings to establish zones. (1) The State Parks and Recreation Department may establish zones on the ocean shore where travel by motor vehicles or landing of any aircraft except for an emergency shall be restricted or prohibited. After the establishment of a zone and the erection of signs or markers thereon, no such use shall be made of such areas except in conformity with the rules of the department.

(2) Proceedings to establish a zone:

(a) May be initiated by the department on its own motion; or

(b) Shall be initiated upon the request of 20 or more landowners or residents or upon request of the governing body of a county or city contiguous to the proposed zone.

(3) A zone shall not be established unless the department first holds a public hearing in the vicinity of the proposed zone. The department shall cause notice of the hearing to be given by publication, not less than seven days prior to the hearing, by at least one insertion in a newspaper of general circulation in the vicinity of the zone.

(4) Before establishing a zone, the department shall seek the approval of the local government whose lands are adjacent or contiguous to the proposed zone.

OAR 736-022-0005

Policy

(2) Establishment of zones on beaches where vehicle use may be restricted or prohibited will be determined after evaluating the relative significance of public and agency concerns for safety, access, scenic and recreation values, seashore resources, and beach management:

(a) Safety — The following concerns will be considered to promote safety for all beach users:

(A) Beach Use — To assure the safety of beach users, added concern will be given to times and locations of heavy use by the general public;

(B) Beach Space — Beach areas that are too limited in usable space to serve both pedestrian and vehicular uses may be closed to vehicles;

(C) Hazardous Conditions — Beach areas with restricted visibility or hazardous conditions for vehicular use may be closed to vehicles;

(D) On-Shore Residents — Vehicular use on beaches may be restricted or prohibited at times and locations where the safety of on-shore residents or property has been significantly affected by such beach use.

(b) Access Concerns — The public need for vehicular access onto the beaches will be evaluated for each beach and region of the coast:

(A) Need — The need for vehicular use on individual beaches will be considered. The availability and convenience of existing on-shore parking and pedestrian access and facilities will be a factor in determining the need for vehicular parking or recreational travel on the beach itself;

(B) Wood Gathering — Adequate opportunities need to be assured for non-commercial gathering of wood consistent with the State Beach Log Removal Policy;

(C) Disabled Persons — Adequate opportunities need to be assured for disabled persons to have reasonable beach access and use.

(c) Scenic and Recreation Values — Zones will be established to best utilize and protect the outstanding scenic and recreation resources of the coast:

(A) Scenic Values — Consideration will be given to retaining the natural attraction of outstanding scenic features. Vehicle use on beaches immediately adjoining outstanding public viewpoints or scenic areas may be restricted;

(B) Recreation Interests — Evaluation will be made of the public's recreation interests and priorities at each beach and region of the coast. This will assist in accommodating a broad variety of beach use interests at the most logical locations.

(d) Natural Resources — Adequate protection will be afforded to significant natural resources at appropriate times and locations:

(A) Intertidal Marine Life — Protection will be afforded to significant marine garden areas and other marine life which would be vulnerable due to vehicular access;

(B) Clambeds — Protection will be afforded to clam propagation needs at significant areas;

(C) Wildlife Habitats — Protection will be afforded to significant coastal wildlife habitats where protection from vehicles is required;

(D) Coastal Vegetation — Protection needs will be evaluated where significant vegetation requires special protection.

(e) Beach Management — The public services involved in management of the beaches will be considered:

(A) Management Access — Adequate vehicular access will be required at some beaches for ocean shore patrols, law enforcement, control of fires, search and rescue, property protection, and control of litter and sanitation;

(B) Enforcement — The ability to adequately enforce vehicle use regulations at the beach will be considered. Where reasonable control would not be feasible, the beach may be closed to vehicles;

(C) Public Costs — Consideration will be given to the costs involved for government to effectively manage and enforce the beach proposal being evaluated.

Council Communication

Local Elected Officials: A Guide to Emergency Management

| | | | |
|-----------------|------------------|------------------------|------------------------|
| Meeting Date: | February 8, 2023 | Primary Staff Contact: | Cassidy Boyle |
| Department: | City Council | E-Mail: | CBoyle@lincolncity.org |
| Secondary Dept: | | Secondary Contacts: | |
| Approval: | Daphnee Legarza | Estimated Time: | 30 minutes |

Attachments:

Local Elected Officials.pdf (PDF)

LOCAL ELECTED OFFICIALS

A Guide to Emergency Management



Today's Outline

- 1 Hazards in Oregon
- 2 Before, During, and After Disasters
- 3 A Project for Council
- 4 Emergency Operations Center (EOC)
- 5 A Tour of Social Media



FEMMA

LOCAL ELECTED AND APPOINTED OFFICIALS GUIDE: ROLES AND RESOURCES IN EMERGENCY MANAGEMENT

TSUNAMIS

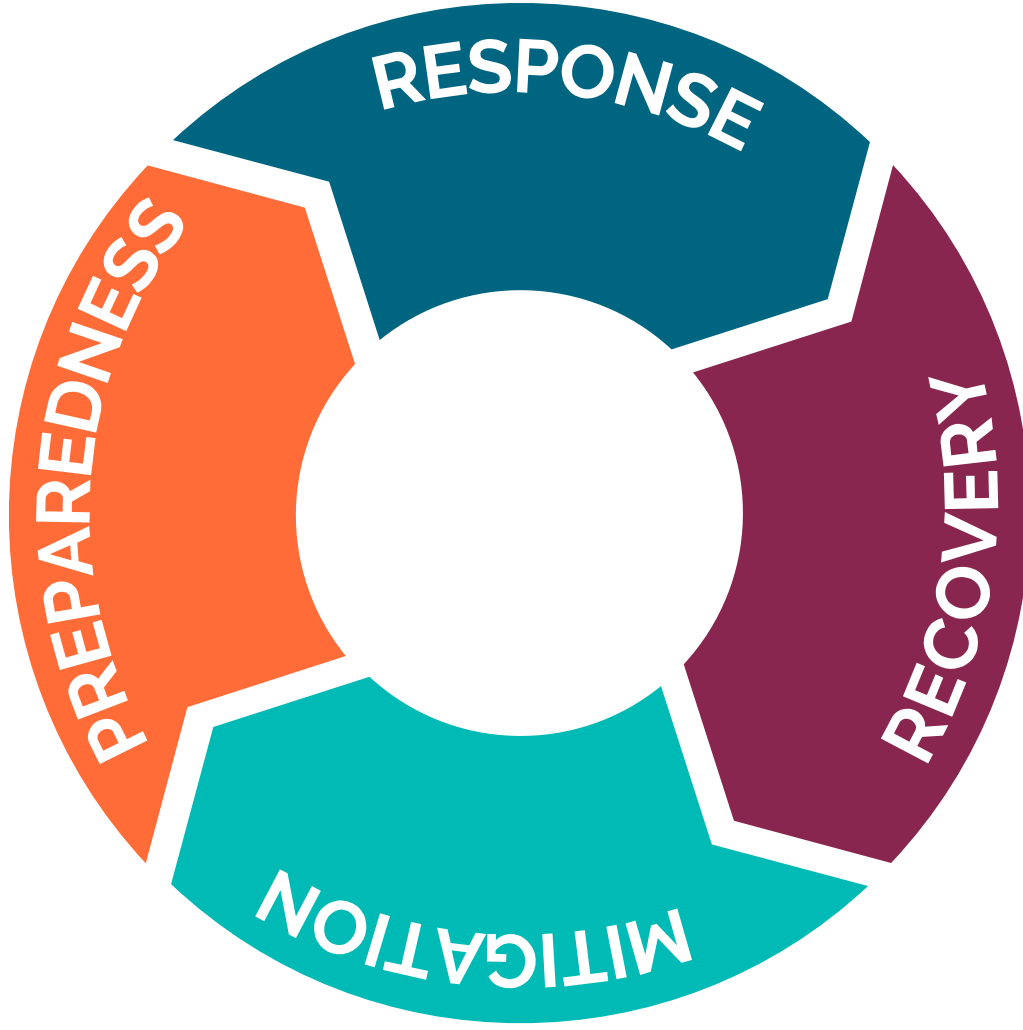
SEVERE WEATHER

VIOLENT
INCIDENTS

EARTHQUAKES

WILDFIRES

FLOODS



DISASTER CYCLE

Emergency managers think of disasters as recurring events with four phases. The significance of the emergency management cycle is that all communities are in at least one phase of emergency management at any time.

THE ROLE OF ELECTED OFFICIALS **BEFORE** IS TO **PREPARE**

ESTABLISH PREPAREDNESS PRIORITIES

Work to establish preparedness priorities and encourage coordination and collaboration on the city's mitigation, response and recovery planning efforts.

CHAMPION COMMUNITY RISK REDUCTION

Champion community risk reduction by adopting and implementing mitigation and climate adaptation strategies.

ENCOURAGE PREPAREDNESS

Encourage individuals, families and businesses to develop emergency plans and be self-sufficient in the immediate aftermath of a disaster.

Equity Considerations

Understanding community needs and knowing where to target assistance in advance of an incident will help to:

- Identify potential areas for strengthening existing engagement strategies and begin to create new relationships, particularly those in racially, ethnically, economically and religiously diverse communities as well as those with access and functional needs.
- Support communities in becoming more self-sufficient to reduce loss of life and property.
- Include the most at-risk members in communication outreach, emergency alerting, scenario planning and exercises.
- Expand green and resilient infrastructure to protect communities from the impacts of climate change and extreme weather incidents, ensuring that projects promote equitable resilience and benefit the entire community.
- Direct scarce recovery funding to areas of greatest need.

Individual Preparedness

- How will I receive emergency alerts and warnings?
- What is my shelter plan?
- Do I have enough food, water and supplies (including medical supplies) to survive on my own?
- What is my family/household evacuation route and plan?
- What is my family/household communication plan?
- What are my transportation options?
- Do my plans include household pet or service animal considerations?



EVACUATION PRACTICE

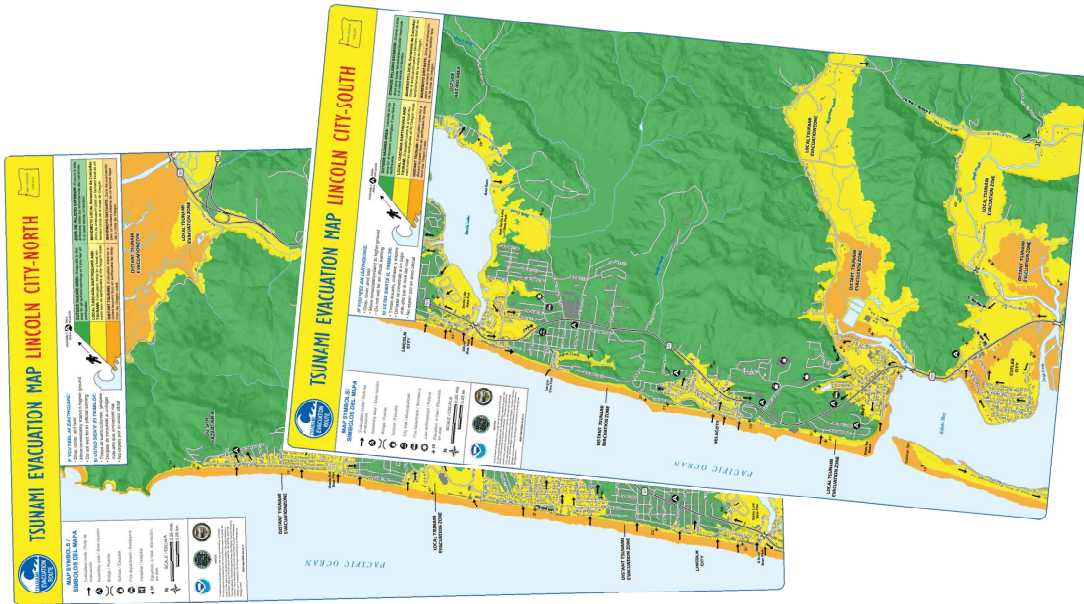
Who: Interested neighborhood associations and neighborhood groups.

What: Evacuation exercises focused on walking evacuation routes and reviewing earthquake and tsunami safety.

Where: Neighborhoods within tsunami evacuation zones (orange and yellow zones).

When: If we start gathering interest now, we can hold events throughout the summer.

Why: To practice earthquake and tsunami evacuation in real neighborhood settings.



THE ROLE OF ELECTED OFFICIALS DURING IS TO SUPPORT

GET INFORMED QUICKLY

Get informed quickly and stay in close touch. Develop a regular meeting schedule with the EOC and appropriate individuals.

TRUST AND EMPOWER

This may include obtaining assistance, declaring a state of emergency, issuing emergency orders and assuring compliance with proper fiscal procedures.

COMMUNICATE WITH THE COMMUNITY

Communicate quickly, clearly and effectively to the whole community and work with the PIO to ensure coordinated and accessible communication.

LOCAL DISASTER DECLARATION

Emergency powers and authorities that local declarations may make available:

- Expand available government resources, re-direct personnel and alter functions of local government offices or contractors to perform response and recovery activities.
- Obtain essential goods and services, such as food or temporary housing.
- Initiate sheltering-in-place, evacuations, curfews, quarantines or isolation.
- Suspend provisions of local laws that might hinder protection of lives or property.

Mutual Aid

Most jurisdictions do not maintain resource levels, such as personnel, teams, facilities, equipment and supplies, to handle extreme incidents on their own, so mutual aid agreements help jurisdictions to:

- Specify how mutual aid agreements are to be activated when needed.
- Coordinate response and recovery planning.
- Expand available response resources.
- Define relationships among partner jurisdictions.
- Arrange for specialized resource deployments.
- Designate responsibilities for workers' compensation.
- Reduce uncertainty regarding liability claims.
- Temporarily expand the number of available licensed professionals.
- Recover costs of response and recovery.



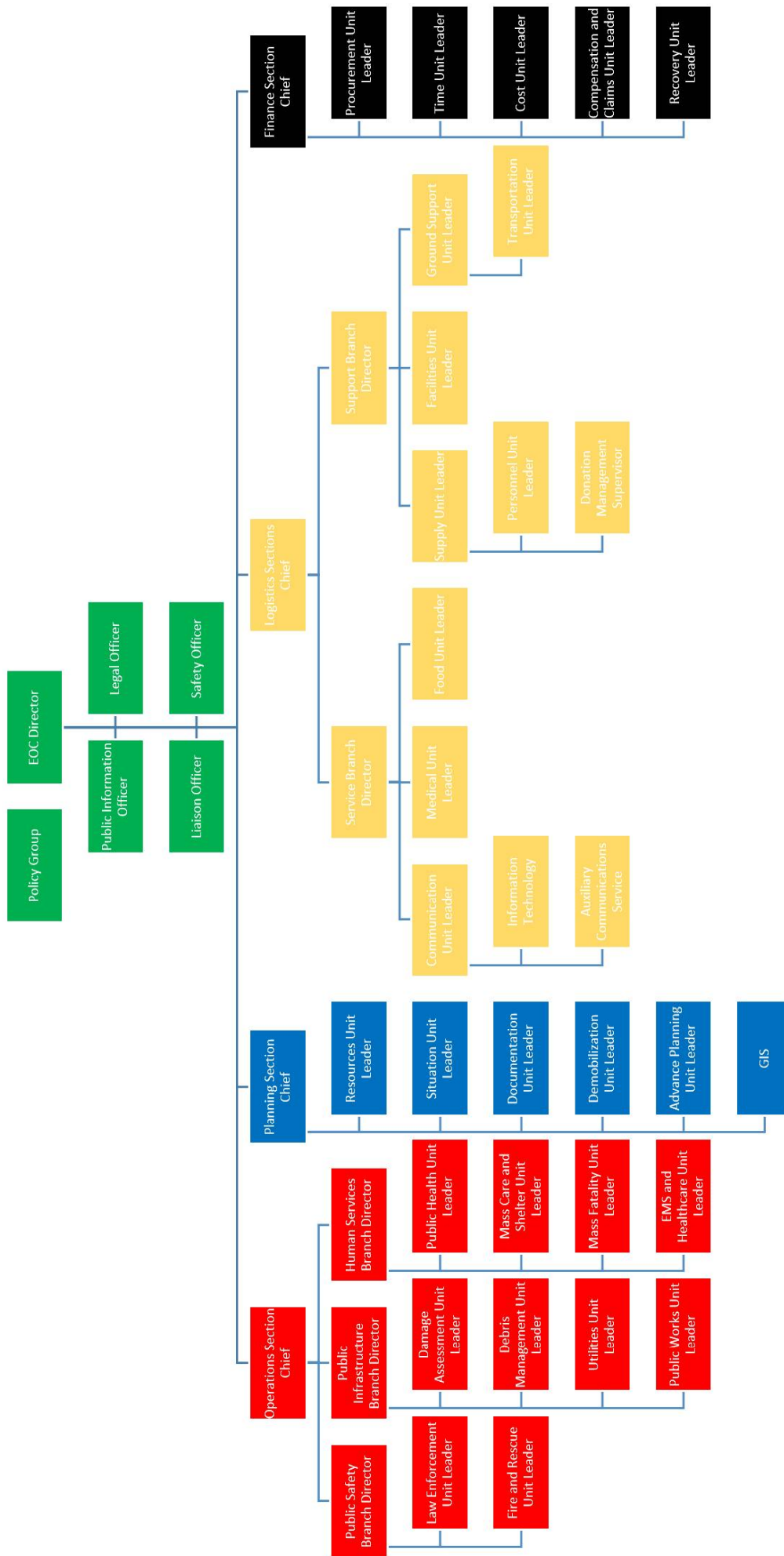
EMERGENCY OPERATIONS CENTER (EOC)

Lincoln City
Police Department



- ✔ Collect, share and disseminate information.
- ✔ Support resource needs and requests.
- ✔ Coordinate plans and determine current and future requirements.
- ✔ Support public communications.
- ✔ Conduct liaison with partners.
- ✔ Support the policy and legal needs of decision makers.







Text your zip code to 888-777 to receive community information

Lincoln City

KING TIDES Safety Reminders

1. Obey beach access closures
2. Avoid low-lying coastal areas
3. Use caution on slippery surfaces
4. Be aware of sneaker waves
5. Stay off rocks and jetties
6. Do not climb on driftwood
7. Stay away from cliff edges

Lincoln City

Stay off roads
Stay indoors and dress warmly

Prepare for power outages

Use generators outside only

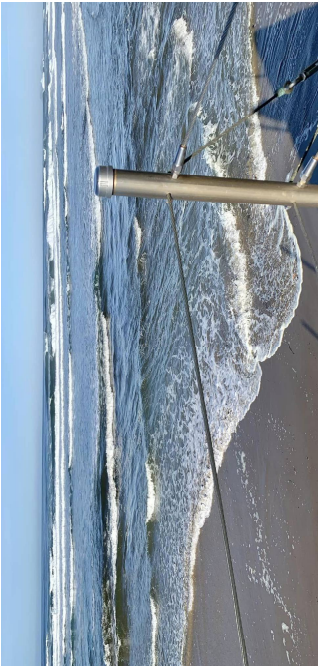
Listen for emergency information and alerts

Look for signs of hypothermia and frostbite

Lincoln City

WINTER STORM WARNING

Lincoln City



To sign up for emergency notifications visit:
co.lincoln.or.us/alerts

Lincoln City

EARTHQUAKE SAFETY

DROP where you are, onto your hands and knees. Hold still until the shaking stops. If you are in a vehicle, pull over and stay there. Do not use elevators during an earthquake.

COVER your head and neck with one arm and hand. If a sturdy table or desk is nearby, crawl underneath. If no shelter is nearby, crawl, neck to an interior wall. Stay on your knees, bend over to protect vital organs.

HOLD ON until the shaking stops. Under shelter, hold on to it with one hand. If you are in a vehicle, hold on to your head and neck with both arms and hands.

Stay Out Lincoln City

HIGH WIND WARNING

Lincoln City

Prepare Lincoln City

@preparelincolncity

THE ROLE OF ELECTED OFFICIALS AFTER IS TO LEAD

UNDERSTAND AVAILABLE ASSISTANCE

Understand use of the financial and in-kind assistance programs available that will help both community members and the government.

COMMUNICATE WITH THE COMMUNITY

Clearly communicate with community members and set realistic expectations to help instill trust and confidence during the recovery process.

BUILD BACK MORE RESILIENT

Identify opportunities to build more resilient communities through improved planning and smart infrastructure investments that reduce risk.

MASS CARE/ EMERGENCY ASSISTANCE

Provides coordination and support to state, local, tribal and territorial governments and/or jurisdictions for the provision and/or direct delivery of life-sustaining services to survivors.

INDIVIDUALS/ HOUSEHOLDS PROGRAM

Provides financial and direct services to eligible individuals and households affected by a disaster, who have uninsured or under-insured necessary expenses and serious needs.

HOUSING ASSISTANCE

Homeowners and renters who sustained damage to their homes, may receive financial assistance (funds provided to an applicant) and direct assistance (housing provided to the applicant by FEMA)

EMERGENCY WORK

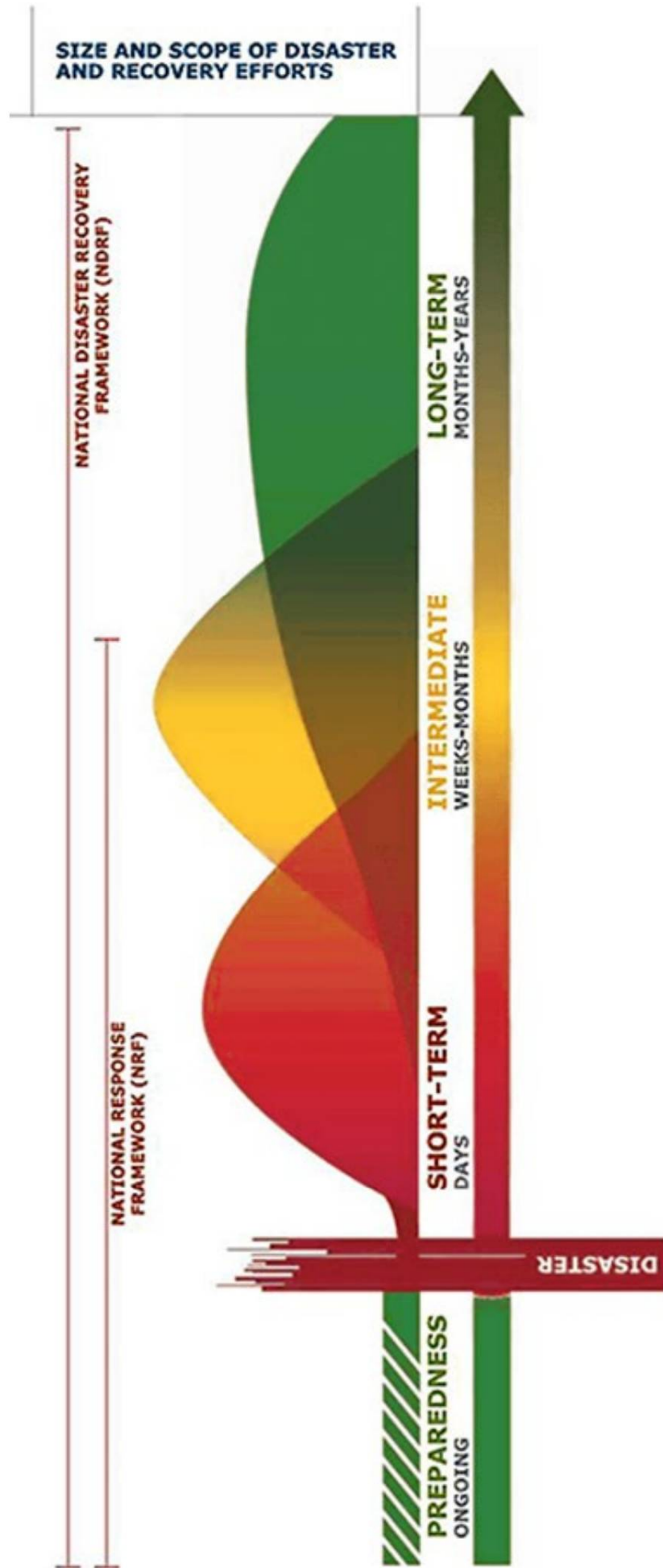
- Debris removal – expenses related to clearance, removal and disposal of incident related debris.
- Emergency protective measures – expenses related to activities like flood fighting, search and rescue, firefighting, scene security, operating an emergency operations center, evacuation and sheltering.

PERMANENT WORK

Repair damages to pre-disaster conditions on the following:

- Roads and bridges
- Water control facilities
- Buildings and equipment
- Utilities
- Parks, recreational and other facilities

THE RECOVERY CONTINUUM



QUESTIONS?

Cassidy Boyle
Emergency Preparedness Coordinator
cboyle@lincocity.org
Office: 541-996-1235 | Cell: 541-921-8198

